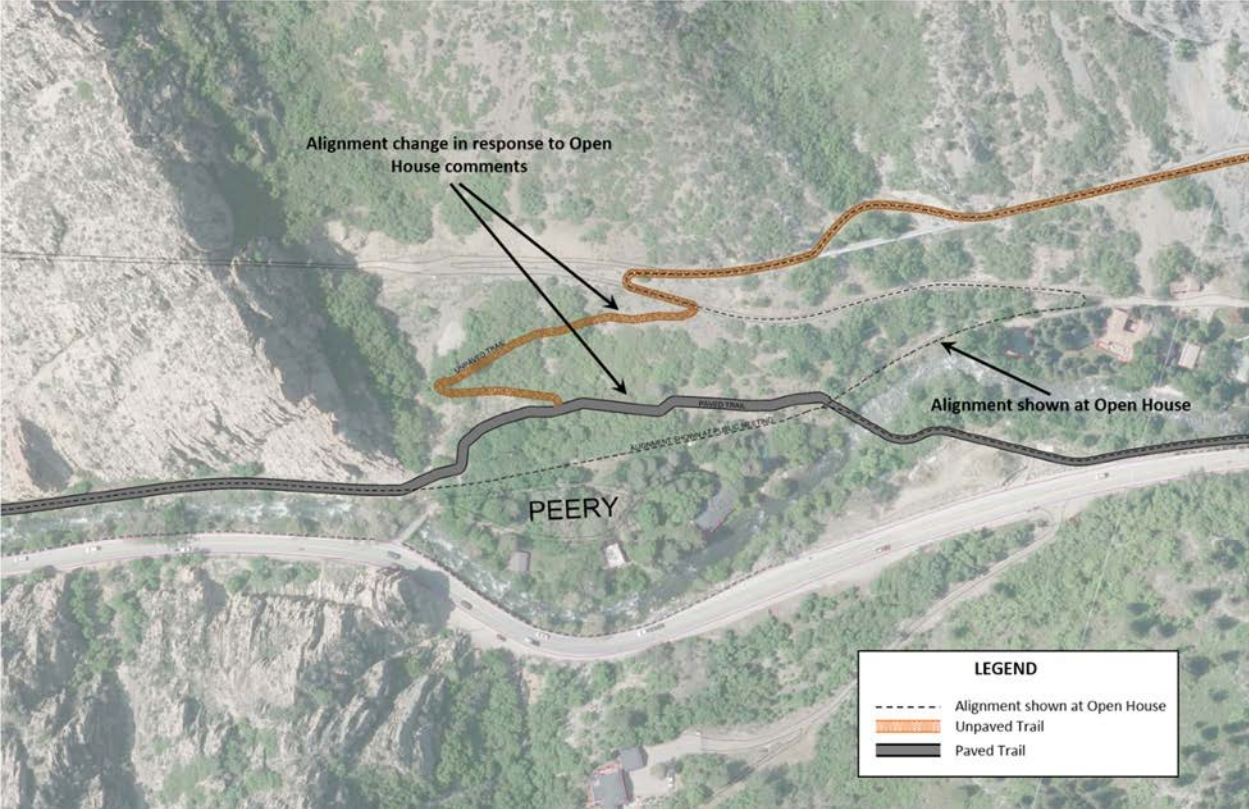


7.0 TRAIL ALIGNMENT CHANGES IN RESPONSE TO COMMENTS

The trail alignment that was recommended by the Focus Groups was presented at the Public Open House on April 28, 2016. Much of the trail alignment was well-received by the open house attendees; however, there were four areas that the public had some concerns with.

7.1 Area 1 – Peery Camp

The biggest trail alignment changes based on public comment were made around the Peery Camp area. There was a lot of concern about how close the proposed trail was the homes in Peery Camp. To mitigate these concerns, the trail was moved up the mountainside to the north to respect the privacy of the Peery Camp residents. A maximum slope of 6% was used to gain elevation up the mountainside and to take the trail back down towards the river.

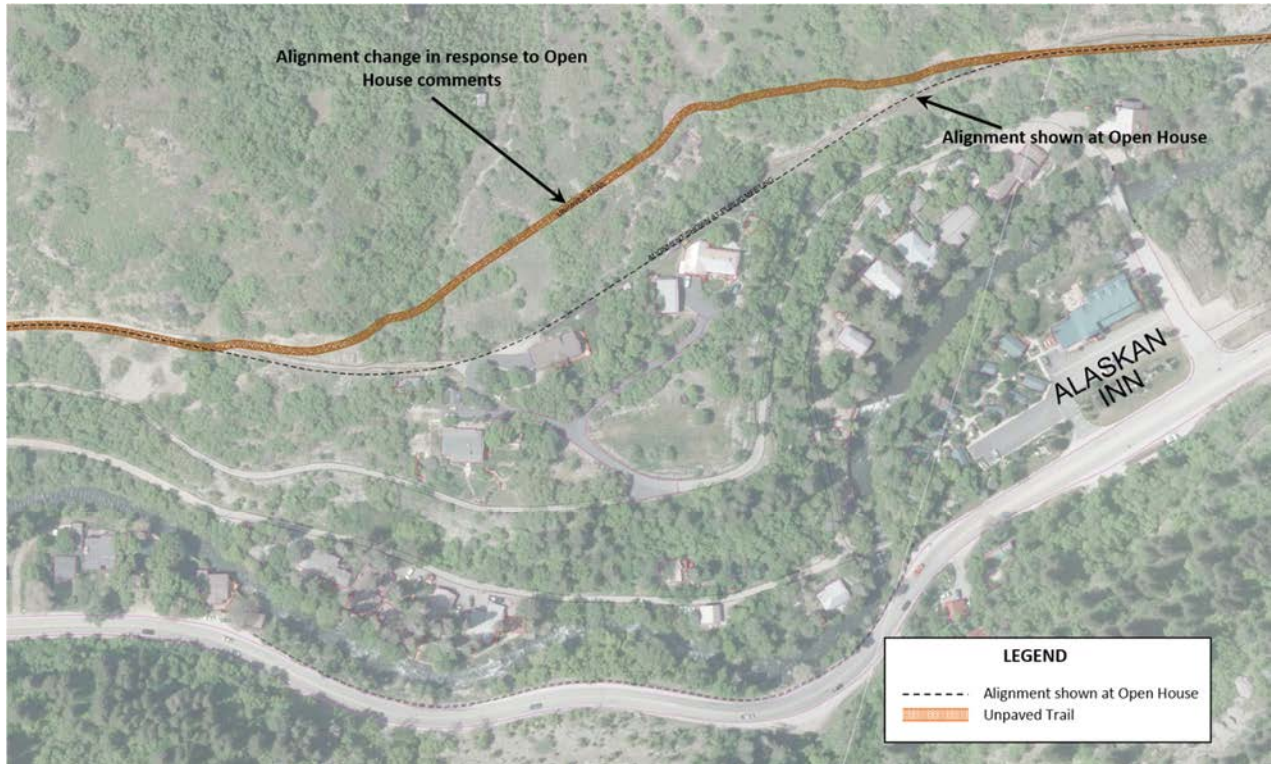


Another concern in the Peery Camp area was the proximity of the trail to the homes at the west end of Lower Fairmont. There were worries that trail users coming down the mountain from the pipeline could see into the homes by the lower switchback, and that they could even cause erosion or debris problems for the Lower Fairmont residents. To alleviate these concerns, the climb up the mountain was moved to the west, taking off from the adjusted alignment described above. The new proposed trail is designed with a 15% maximum slope. While not ideal, the 15% slope is not unprecedented – there are several places on the existing maintenance road for the pipeline where the slope is 15-20%. Also, this alignment requires another switchback. This option may mean putting in a wall or finding other ways to stabilize the slopes along the trail, but at this point it seems feasible.



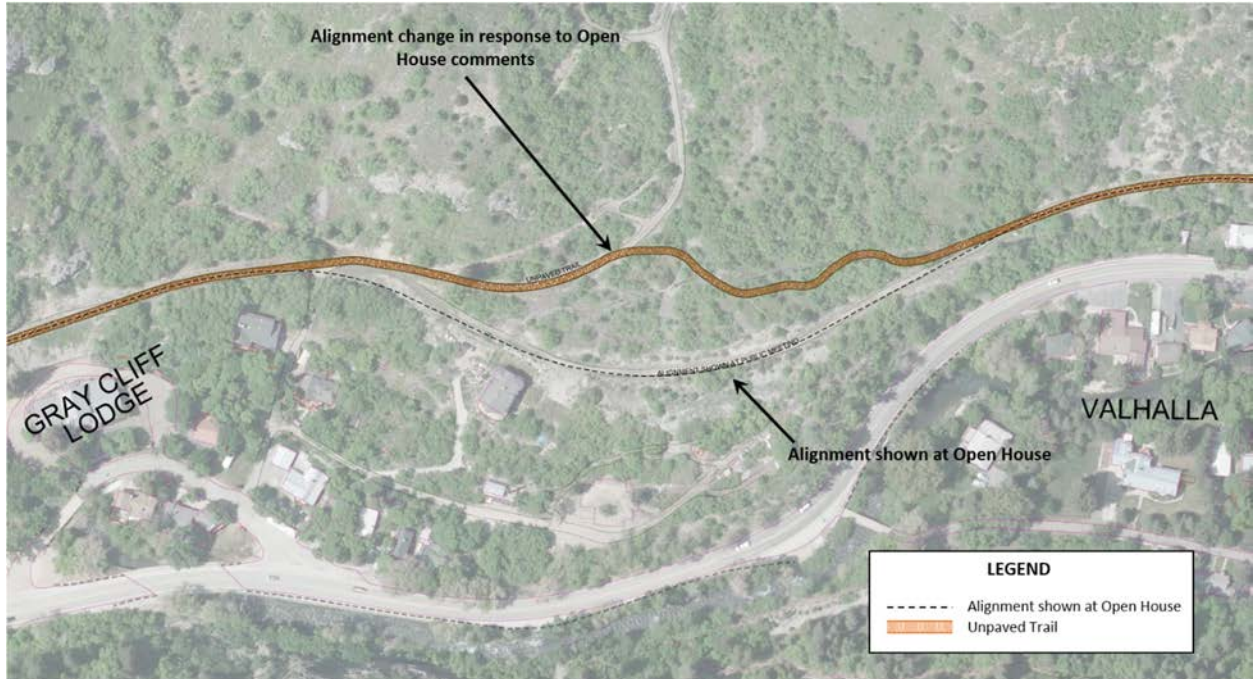
7.2 Area 2 - Alaskan Inn

As the trail approaches the Alaskan Inn from the west, there were concerns about the proximity of the trail to some residents just south of the proposed alignment. The trail was moved up the mountainside to stay above and out of the way of the highest homes. The terrain here is not as well suited for a trail and would require more slope stabilizing measures, but it does provide the residents with more privacy.



7.3 Area 3 – East of Gray Cliff Lodge

This area is very similar to the Alaskan Inn area – the trail was moved slightly uphill to avoid close proximity to homes.



7.4 Area 4 – Bachman Residence

The concern at the Bachman residence was the proximity of the trail to the back of the home. The proposed trail was elevated at the back of the house, making it essentially level with the second story of the home. The trail location was changed to pass in front of the Bachman home, paralleling SR-39. Barrier would need to be added to protect trail users from SR-39 traffic, and the road may need to be shifted slightly south to make room for the trail between the roadway and the wall on the Bachman property.

